

# Crosswalks, Curbs and Signs at Fritsch ES (on-campus)

## Summary

The parking lot crosswalk on campus will be extended through the bus lane. The yellow curbs in the parking lot south of Building A will be repainted white to indicate that they are parking spaces rather than drop-off/pick-up zones. A bus sign will be added to reinforce the pavement markings for the bus lane

## Extension of Crosswalk On-Campus

The crosswalk in the main parking lot stops at the bus lane and does not continue to the curb, which gives priority to buses over pedestrians. This crosswalk should be extended through the bus lane, and marked with a yield line at 5m from the crosswalk.

A crosswalk should be painted over the driveway that provides access from the bus lane to the east parking lot so as to provide pedestrians precedence over vehicles.

The extraneous crosswalk at the west side of the main parking lot will be removed by abrasion or painting over.

## Cost

traffic paint, white, about 12 feet at \$4/ft	48
paint, black, about 40 feet at \$4/ft	160
<i>subtotal</i>	<i>\$208</i>

## Curb Color Correction and Refresh

A yellow curb is painted along marked parking spaces in the east parking lot, which leads to confusion about the correct use of these spaces, and about yellow curbs at other locations on and off campus. Accumulated old paint should be removed, and then the curb painted white or grey, except for the one handicap blue space.

## Cost

traffic/curb paint, white or grey, about 200 feet at \$4/ft	800
preparation and painting	500
<i>subtotal</i>	<i>\$1300</i>

## Bus Lane

A "School Bus Only" sign will be added to the entry of the bus lane on the right side to reinforce the pavement markings present.

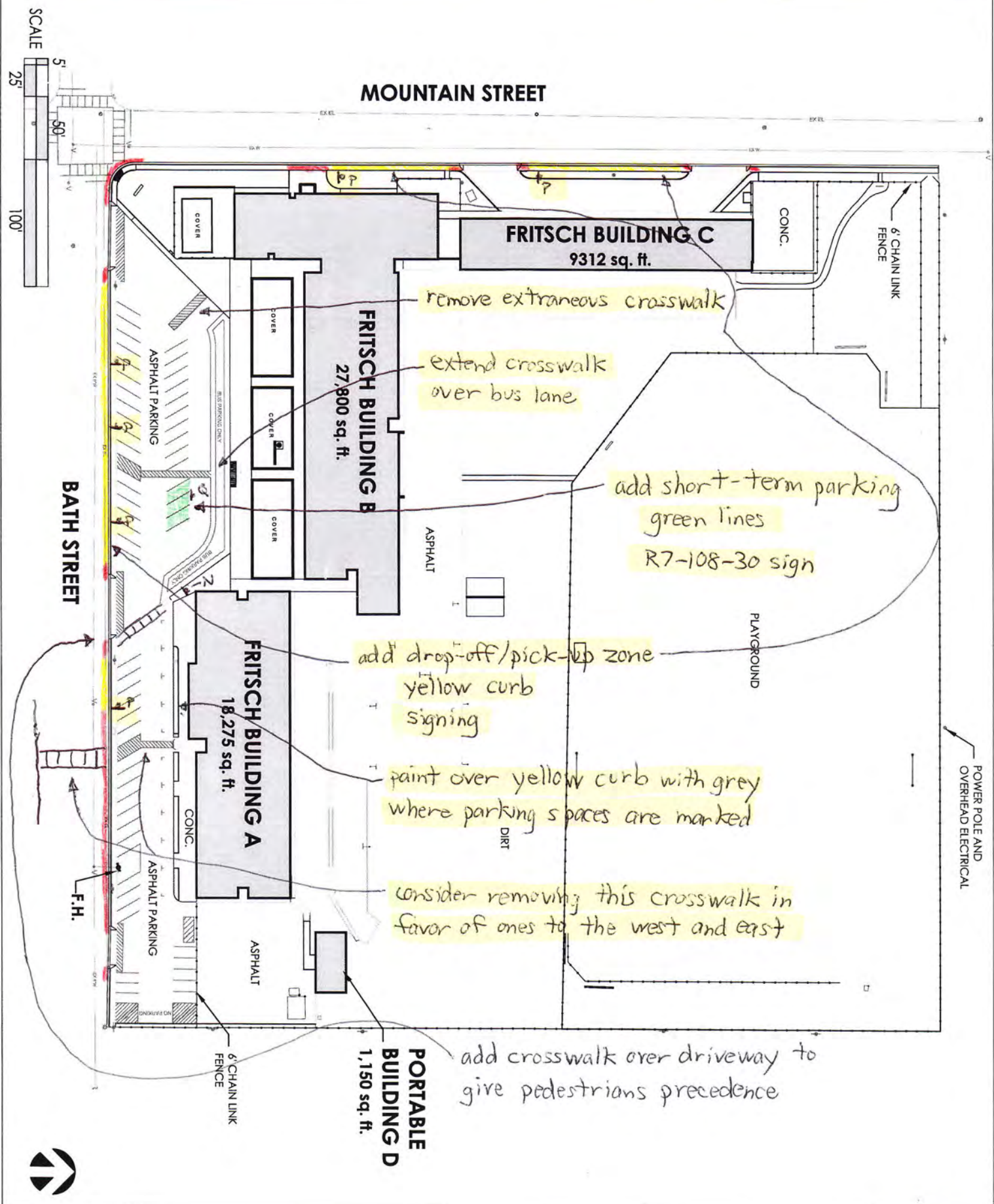
## Cost

"School Bus Only" sign, 18x24, 1 at \$33	200
above sign, Spanish translation, 12x18, 1 at \$32	50
<i>subtotal</i>	<i>\$250</i>

***Total Cost (rounded)*** ***\$1800***

**Future**

The entire parking lot area should be reconfigured to create a bus lane physically separated by a curb from the parking area and drop-off/pick-up area, to reverse the flow of the east parking lot and create a separate exit so that traffic does not use the bus lane, nor cross the main pedestrian route into the school. However, this project is not part of this grant proposal.



Date:  
Nov 1, 2005

A.P.N.  
1-111-01

**FRI SITE**

# FRITSCH CAMPUS

## 504 BATH STREET



# New Signs at Fritsch ES (On-Campus)

N1



Custom sign: add new  
18x24 sign at entrance to  
bus lane