

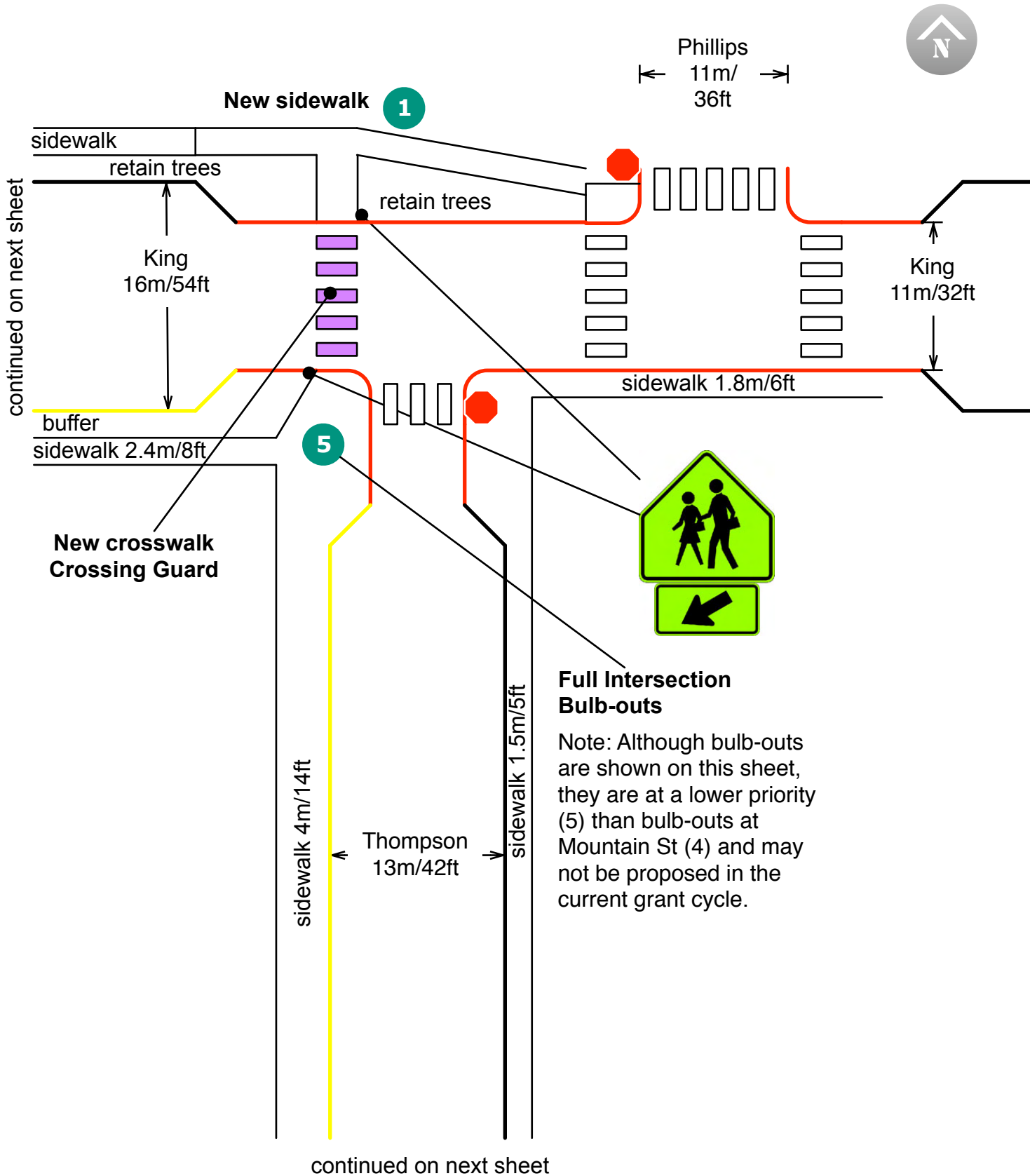
SRTS Sidewalk Installation at Bordewich Bray ES

The entire neighborhood surround Bordewich Bray Elementary School has gaps in sidewalks, where they are discontinuous or present only on one side of the street. Fortunately many of the streets have a low traffic volume and low speed. There are sidewalks missing immediately adjacent to the school campus, which is a particular issue since more students use the crosswalks closest to they school. Three sidewalk projects are proposed, in order of priority.

1. Install 30m of 8-foot (2.5m), or 5-foot (1.8m) with a buffer, sidewalk on the north side of King Street from Phillips Street west to the existing sidewalk; install a new crosswalk from the northwest corner of King Street and Thompson Street to this new sidewalk, with bulb-outs occupying the parking lanes and reducing crossing distance from 54 feet to 32 feet. This would become the crosswalk staffed by a crossing guard. As a mid-block school crosswalk without controls, it would require new signing. This may require property purchase or negotiation.
2. Install 30m of 8-foot (2.5m), or 5-foot (1.8m) sidewalk from the end of the existing school sidewalk to the corner of Thompson Street and Third Street. This may require property purchase or negotiation.
3. Install 30m of 5-foot (1.8m) sidewalk with buffer along the east side of Thompson Street from Second Avenue south to the existing sidewalk. This may require property purchase or negotiation.



Sidewalk Installation for Bordewich Bray ES



continued on next sheet

Note: Although bulb-outs are shown on this sheet, they are at a lower priority (6) than bulb-outs at Mountain St (4) and may not be proposed in the current grant cycle.



sidewalk 14-foot

Thompson
13m/42ft

Intersection Bulb-outs

6

Second
11m/36ft

Crossing Guard

no sidewalk

bus and
parking
driveway

FH

sidewalk 1.5m/5ft

no sidewalk 30m
install 1.5m/5ft sidewalk with buffer

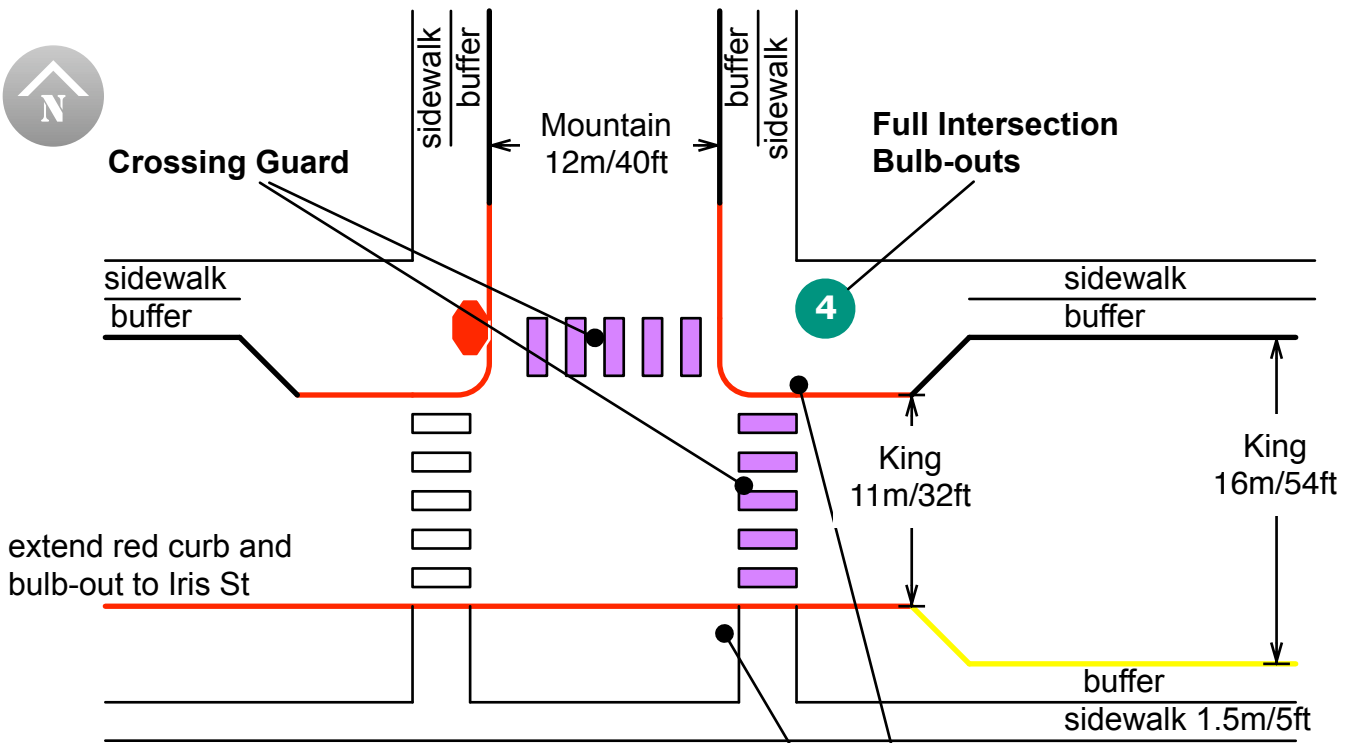
3

Note: Consideration should be given to moving the crosswalk and bulb-outs to Thompson and Third, leaving the entire long block for a Kindergarten drop-off/pick-up zone. With an expanded zone, Kindergarten students and their parents might not have to cross Thompson at all.

2

no sidewalk 30m
install 15m/5ft sidewalk with buffer

Third



extend red curb and bulb-out to Iris St

Note: Students and families will be encouraged to use the east crosswalk of King St, through sidewalk markings and education by the crossing guard.

