

Eagle Valley MS On-Campus Existing Conditions Report and Recommendations

The situation at Eagle Valley Middle School can be summarized as one which welcomes and encourages cars, while making pedestrians, bicyclists, skateboarders and scooter users feel unsafe and unwelcome.

Internal Sidewalks

- The sidewalk on the west side of the upper loop parking lot is narrow at five feet, however current pedestrian use patterns do not bring many students onto this sidewalk.
- The walkway created on the east side of the parking lot by setting the parking barriers about five feet from the curb is useful, but a number of large staff-owned SUVs and pickup trucks park across the barriers so that they block the walkway and force students onto the adjacent grass, which is fine during good weather, but not during inclement weather and snow accumulation. The area is hard to clear of snow because of the parking barriers. This area is heavily used by students walking to school.
- Students who are dropped off by parents must negotiate a narrow and unsafe sidewalk area on their way to the stairs down the the student gathering area outside the student lunch room. The sidewalk, which is 8 feet around the circle, has an abandoned bicycle rack placed in it, then narrows to four feet and runs along a steep drop off. It passes a parking space which is a favorite for a large staff-owned pickup truck which hangs over the sidewalk and nearly blocks passage. As a result, most students walk across the parking lot, exposing them to danger from parents who are dropping off students and then speeding out of the parking lot.

Storage of Bikes, Scooters, and Skateboards

- At the front of the school, there is one completely abandoned bicycle rack installed on a sidewalk, which presents a tripping hazard to pedestrians. Another bike rack north of the entrance is seldom used. Two other bike racks west of the entrance are used to some degree. These two are placed on a grass area which is seldom mowed, becomes very soggy in wet weather, and is not cleared of snow during the winter. This bicycle area clearly communicates to bicycling students that they are lower class citizens.
- Skateboard use is low at the school, mostly because there are few paved access routes to the school. A skateboard locker with a capacity of eight boards has been installed on a wall just outside the lunch room. It seems to be used often, and the capacity may need to be increased as more students skateboard to school.
- Scooter use appears to be very low at the school



Drop-off and Pick-up

- The school has created a drop-off and pick-up procedure which requires vehicles to stop in a red zone, which is inappropriate and illegal. In addition, the school is using the circle at the end of the upper loop as the main area for drop-off and pick-up, despite that fact that this circle contains a fire hydrant and the main school standpipe. Some vehicles are slow about dropping off and picking up, which causes other vehicles to try to pass, even though the roadway is barely wide enough to do so. Fender-benders are rare but are a constant risk. On the plus side, most students unload to the sidewalks and do not cross traffic.
- Traffic becomes congested all the way out onto Fifth Street during morning drop-off, and from Fifth Street all the way back to the circle during afternoon pick-up. Most of the time emergency vehicle access would not be completely blocked, except by parent vehicles which are using the circle.
- Except when congestion slows traffic, no drivers are following the posted 5 mph speed limit, including school staff. If a speed limit is to be posted at all, it should be one that people would respect and follow, 10 mph. No purpose is served by posting a rule which is never followed.

Solutions for Internal Sidewalks

- Staff must be educated to not park large vehicles in locations and in such a way that they block safe use of the walkway created by parking barriers along the east side of the parking lot. There are too many parking spaces here to make installation of “compact vehicles only” signs practical.
- The corner parking space and striped zone that is sometimes used for motorcycle parking must be converted to pedestrian use by installing a sidewalk that is a minimum of eight feet wide, extending from the existing eight foot sidewalk past the head of the steps down to the lower area. The abandoned bicycle rack must be removed. This change is shown on the attached Proposed Campus Changes map.
- An eight foot sidewalk should be installed along the east side of the parking lot and out to the crosswalk so that it provides a welcoming entry to the campus and can be cleared of snow during the winter.
- The decorative block wall at the entrance to the school should be modified so that there is a welcoming entrance for students and not just for cars.

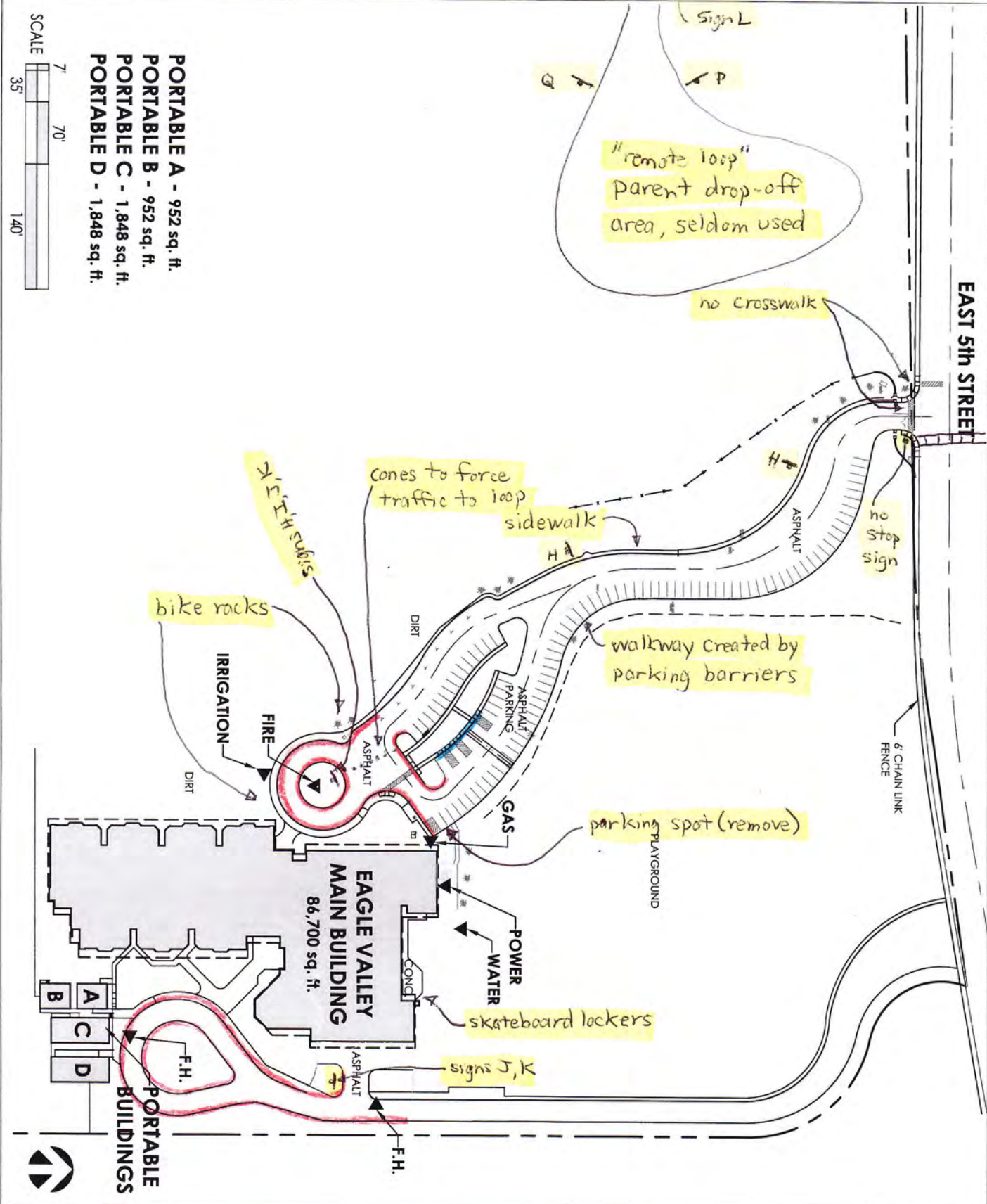
Solutions for Storage of Bikes, Scooters, and Skateboards

- The skateboard locker should be monitored for level of use, and as soon as it is full more than one day per week, additional capacity should be added.
- The abandoned bicycle rack and the seldom used bicycle rack should be removed. A paved area for bicycles should be added west of the entrance, in the same area as the racks are currently. A modern bicycle rack with a capacity of eight bikes should be installed on this paved area. The rack could be purchased in the school colors. The existing traditional bicycle racks can be kept until replaced by modern bicycle racks. The racks should be monitored for level of use, and as soon as they are full more than one day per week, additional modern bicycle racks should be added.



Solutions for Drop-off and Pick-up

- The drop-off/pick-up zone should be moved from the circle to the west side of the parking lot, in the area now occupied by parking spaces. The sidewalk should be widened through this section, which is easy with the removal of spaces, painted yellow, and signed appropriately for drop-off and pick-up. Vehicles would then turn before the circle, where pavement arrows would guide them back out of the area. This change is shown on the attached Proposed Campus Changes map.
- Some portion of drop-off/pick-up traffic should be moved out of the upper loop to the remote loop. This is probably most easily accomplished by requiring drop-off and pick-up of eighth grade students to occur here, though it will take considerable parent education and enforcement before this is fully successful.
- The three red curb “reserved parking only” spaces should have their curb color painted over, since this is an illegal use of red curbs.



Date:
Nov 1, 2005
A.P.N.
10-035-27
EV SITE

EAGLE VALLEY CAMPUS
4151 EAST 5th STREET



Eagle Valley MS On-Campus Signs

H
R2-1 sign



I
R6-2 sign



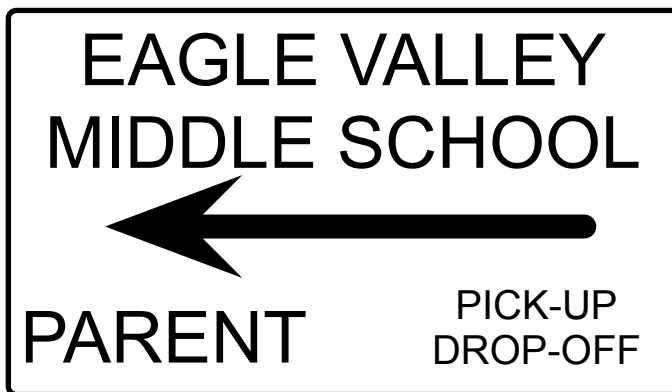
J
custom sign



K
R7-1 sign



L
custom sign



M
custom sign



N
custom sign



P
R5-1 sign



Q
custom sign

